

H_{heavy} **E**_{quipment} **W**_{ash} **S**_{tation}

Model PW4WC2-1842 **Four Station Two Lane Wash Bay**
(military vehicle tactical decontamination station)

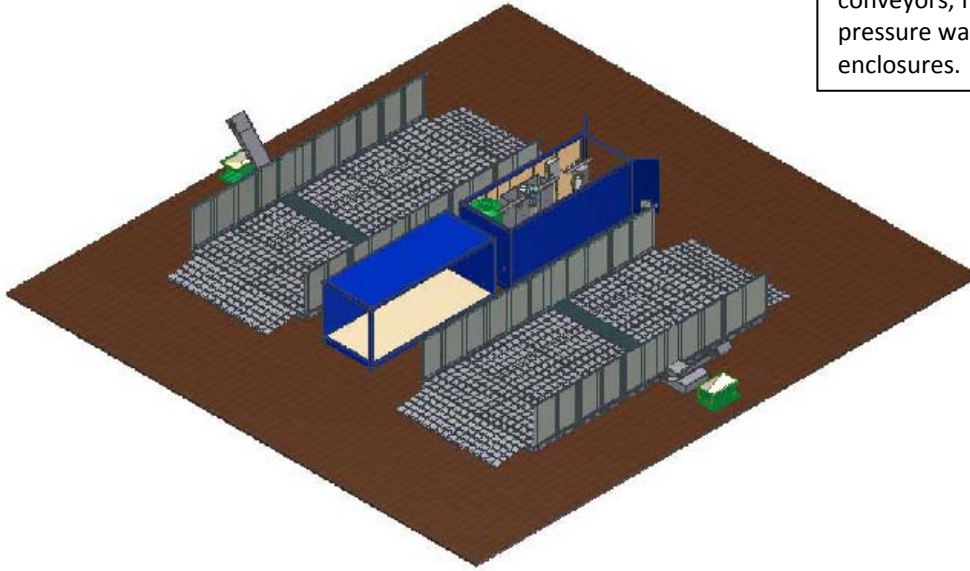
System Description

The Wash Lane

- 2 each 18' x 42' drive through wash pads
 - Non skid smooth surface, no trip hazards
 - Low profile, 6" deck height
 - Low angle, 5 degree ramps at both entrance and exit
 - 90 ton capacity, 3 times higher than undulating portable racks
- Automatic mud conveyors dump mud into portable hoppers
 - Stainless steel wedge wire vacuum filter leaves solids behind (*patent pending*)
 - *Only available from Riveer*
- 4 hot water pressure washers with 75' of hose on reels flush mounted to side walls
- 4 foam guns with 75' of hose on reels flush mounted to side walls
- 2 water cannons with 75' of hose on reels flush mounted to side walls
 - *Only available from Riveer*
 - *Hose reel lockers heated for all-weather use*
- Push button controls in ruggedized NEMA 4 enclosures
- 6' high galvanized over spray walls along both sides

All Riveer wash lanes are 18' wide with 6' high over spray walls. They can be purchased without walls, but when using high pressure washers and water cannons, over spray will be significant. An 18' wide wash pad gives ample room for users on the rack. The non-skid flat surface (as opposed to undulating) provides the users with a safe and comfortable deck to work on.

2 each 18' x 42' wash lanes with mud conveyors, filtration equipment and pressure washers installed in all-weather enclosures.



Marine Corps, (CIBRF) 18' x 35' pad with conveyor (left side). Drive thru configuration
Filtration equipment and pressure washer installed in all-weather enclosure
Rack installed on slightly improved surface

The Wash Station

- 40' long hardened all weather enclosure
 - Heated, air conditioned and dehumidified
 - Tough Cor-Ten steel walls painted to customer spec
 - Aluminum interior walls
 - Aluminum diamond tread plate floors
 - Stackable
 - Transport with crane or forklift
 - Meets all DoD transportation specs
 - Automatic lights
 - Lockable

- 20' long hardened all weather enclosure
 - Heated, air conditioned and dehumidified
 - Tough Cor-Ten steel walls painted to customer spec
 - Aluminum interior walls
 - Aluminum diamond tread plate floors
 - Stackable
 - Transport with crane or forklift
 - Meets all DoD transportation specs
 - Automatic lights
 - Lockable
 - Slave unit to main 40 foot container
 - Includes 4 pressure washers and additional 1000 gallon holding tank
 - Includes 4 high pressure foaming units, with air compressor



Hardened Wash Bay enclosure with air conditioning, heat and custom desert air filter, painted Air Force grey

- Riveer Cyclonator® III all stainless steel filtration system with:

- Internal conveyor dumps settled fines into portable hopper
- Oil coalescing and automatic oil skimmer
- Bioreactor with automatic pH adjust
 - 24/7 air injection
 - Patented fine bubble technology
 - Automatic injection of oil eating bacteria
 - 16 oz per day injector
 - 2 month reservoir
 - 1 year supply provided in overseas deployment kit
- 24/7 ozone injection
 - Injects ozone in holding tank to kill hazardous bacteria

*Manual changeover allows system to change over to **ozone only** for specific applications where bacteria don't perform well.*

- 2 high pressure multi-media filters to remove:
 - Emulsified oil
 - Heavy metals

- Suspended solids
- Automatic back wash and capture of solids
 - No filters to change
- Flow rate of 80 GPM
- 1000 gallon water storage tank for continuous operations in remote locations
- 2 Edson diaphragm recovery pumps
 - Run pumps dry without damage
 - Suction pump recovers all water from rack
 - No sump pumps to clog and fail
- Allan Bradley PLC controls for all filtration systems and washers
- Optional communications package allows remote monitoring/control of all motors and timers
- Meets all US and CE electric standards; UL, TUV, IEC, NEC, NFPA



20' hardened enclosure with Cyclonator Deuce, hot water pressure washer, water cannon, two hose reels mounted at back, high pressure auto backwashing media filter in foreground NEMA 4 electrics, automatic energy saving lights

- Built in wash systems:

- 4 each 3000 PSI 5 GPM hot water pressure washers
 - Diesel or JP-8

- 4 each air injected high velocity foamers with trigger gun controls
- 2 each 125 PSI 25 GPM water cannons with Darley guns



Riveer water cannon

- All guns on self winding reels with 75' of hose
- All pumps auto start/stop with over rides
- All systems in and out of container protected from freezing
 - Includes heated reel and gun locker on rack



4 hot water pressure washers in hardened enclosure

Overseas Deployment Package

- | | |
|------------------------|-------------------|
| • Recovery pump | 1 ea |
| • Filter pump | 1 ea |
| • Pressure washer pump | 2 ea |
| • Air compressor | 1 ea |
| • Automatic air valves | 2 ea |
| • High pressure hose | 4 ea 75' sections |
| • Water cannon hose | 2 ea 75' sections |

- Foamer hose 4 ea 75' sections
- High pressure guns and lances 4 ea
- Water cannon guns 2 ea
- Foamer guns 4 ea
- Multi-media pack 2 each
- Coalescing cubes 4 ea
- Oil skimmer belt 1 ea
- Bacteria 18ea 5 gallon buckets
- Mil Spec soap 20ea 5 gallon buckets

Spares kit comes in lockable cabinet integral to **HEWS** enclosure.

Optional Equipment

- Automatic undercarriage rinse and wheel wash
 - 30 high flow nozzles sequenced to flush complete undercarriage and wheels
 - Momentary on switch controls sequence
- Remote monitoring
 - Internet access and monitoring of all parameters including:
 - Pump operations
 - Water levels
 - Input and output status
 - Timer values
 - Allows for remote trouble shooting and programming
- Optional full enclosure with heat
 - 16' high center
 - Canvas over steel construction
 - Convection heat
 - End closure flaps
- Skid steer side trough instead of conveyor (patent pending)
 - 6' wide mud settling trough runs length of wash pad
 - Provides 900 gallons of additional settling volume
 - Holds 4.5 cubic yards of solids
- Onsite installation and training
 - Riveer personnel install your equipment and train your personnel in operation and maintenance at your site, worldwide
 - Follow-up training on a quarterly or bi-yearly basis to keep your personnel up to date and your equipment operating to spec